

## User manual Zonablu PC Software

### ► Connect your Bluetooth USB Dongle to your PC

A Bluetooth USB Dongle is not included in the purchase of Zonablu PC Software license.



Please connect your dongle to an available USB port on your PC and start up [Zonablu PC Software v.1.](#)

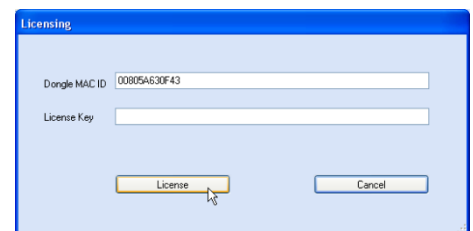


Without a compatible Bluetooth Dongle connected to your PC, Zonablu PC Software will not work properly. The software will not work properly if you have more than one Bluetooth device connected to your PC. Please refer to [www.zonablu.es](http://www.zonablu.es) for more information on Bluetooth Dongle requirements and specifications.

**User license.** For proper use and optimal functioning the software should be licensed.

### ► I already have a license key

To activate the license key in the software go to the software menu bar and click [\[Help\]](#) ► [\[License\]](#). The software should automatically have identified the MAC Id of your Bluetooth dongle. Tab in the license key and click on [\[License\]](#).




Please be aware that the license key that comes with the software is a license for a specific dongle and that it will only work with this Dongle. If you need to use several dongles for your software you will have to purchase a license for each of those as well.

### ► Purchase a license key

Just go to the menu bar option [\[License\]](#) ► [\[Purchase\]](#). From there you will be redirected to the official product website, where you only have to follow the instructions to purchase a license for your dongle.

## Campaign variables

 To prepare a **new campaign** click on the new campaign icon to activate the control panel and begin introducing the campaign variables:


- Campaign name: Create a name to identify the campaign.
- Senders' name: This is the name that appears on the mobile phone requesting a connection.


An example of such a message is:

*Would you like to receive data from [senders\\_name?](#)*


### DELAY TIMES

- Delay if OK: Is the delay between a previous receiver getting a second message from the same sender.
- Delay if failed: Is the time before re-trying to send a message to a receiver that had not successfully received the message the first time.
- Delay if rejected: Is the time before re-trying to send a message to a receiver that rejected the message the first time.

 This icon is used to open a previously saved campaign.

 Once your campaign is created you can save it clicking on this icon.

## Campaign content

 Click on this icon to add campaign files. A new window will open to help you search and select the desired files.

To set up campaign files to be sent by hour and date, just activate the checkbox and choose the time and date intervals desired.

Should two files coincide in date and hour only the first one on the file list will be send.

You can program in time as many campaign files as you want to be send. They will be sent according to the time intervals set up.

 Use this icon to delete a file from the file list.

 Click on this icon to delete ALL files on the file list.

To preview a file, select it and click on this icon  Which will open the file with the program normally used to reproduce the selected file type.


## Broadcast Campaign


 Click on this icon to begin broadcasting the prepared campaign.



When the broadcast monitor is moving it indicates that the campaign is being broadcasted.

- Active campaign file: Show the active campaign file that is being broadcasted.
- Detected devices: Show the number of **different devices** detected since the first time you activated the specific campaign.
- Sent OK: Show the total number of **files sent**, since the first time you activated the active campaign.

 Click on this icon to stop broadcasting the active campaign.


 Click on this icon to clear the Active campaign file and Detected devices counters for the selected campaign.

## Zonablu realtime activity

In this window you can see all the active detected devices and their current Bluetooth communication status with Zonablu PC.

The following events and data will continuously pop up and refresh in the Zonablu realtime activity window:

- The Mac ID of the detected devices.
- Communication status icons:

 Establishing communication.


 File sent OK.



The file was sent OK and Zonablu PC software is waiting to contact again according to what we set up in the variable Delay if OK.



The receiver rejected the reception.

Some of the mobile devices on the market do not distinguish between a rejected and a failed event. When this occurs the icon  >>Establishing communication<< probably will remain active in the real-time activity monitor. In this case Zonablu PC will try to re-send the message according to the set up of the variable >>Delay if rejected<<.

- Bluetooth friendly name of the detected device. When the user has not assigned the device a Bluetooth friendly name this area remains empty.

## Campaign Log

Register the activity and processes that have occurred when running the active campaign.

## Broadcast Log

Register the senders activity and processes.

### ► [Advice about which file types to use in campaigns:](#)

- Static GIF files (\*.gif): Are images compatible with the majority of mobile phones on the market. With the GIF file type you can design your campaign with 256 colours and achieve an acceptable image quality as well as a very low file size measured in Kbytes, this allows you transfer your message to the target audience at a great speed.

Because of the screen size on the majority of the mobiles on the market we recommend the use of images no larger than 240 pixels by 320 pixels. If you launch messages with a larger pixel size, mobile phones with smaller screens will automatically reduce the image to fit the screen. This at the same time will reduce or distort your image quality and text included in the image, with the risk that the target will not be able to read your message. We recommend the use of Adobe Photoshop Cs 3 (Not included with Zonablu PC software).

- Animated GIF files (\*.gif): This is the same file type as the static GIF files, however this file type allows you to show a series of images and control the reproduction time of each image within this series independently. An animated GIF file will allow you to send a more creative and dynamic content in one message.

There are various software and freeware packages that all allow you to design animated GIF files. However, we recommend Adobe Image Ready or Adobe Photoshop Cs 3 (not included in with Zonablu PC software). For good results keep GIF files to between 100kb and 150kb

- Text files (\*.txt): This file type is compatible with the majority of the mobile phones on the market and allows you to send text messages. There is no limit to the number of letters that you can send with this file type. However for the convenience of the readers we recommend that you send short text messages. Please be aware that the receiving mobile phones will show the text sent in different ways, depending on the model of the mobile phone.

You can generate text (\*.txt) from the notebook in windows or from any text processing software, saving the file as \*.txt

- Business card or Vcard (\*.vcf): This file type is ideal if you wish to send a name and phone number to be incorporated directly in the agenda of the receivers mobile phone, once accepted your message. A Vcard can be generated from Outlook (Software is not included with the Zonablu PC software).

File menu » New » Contact (type in the contact) » Save as... \*.Vcard file.

- Video files (\*.3gp): As mentioned before you should be aware that not all mobile phones equipped with Bluetooth are able to reproduce video files. However if you wish to send video files they should be in \*.3GP files with MPEG-4 codec. This is the most common video file format for mobile phones on the market.

There are various software programs for video editing that support these type of files. We recommend Quicktime Pro by Apple Computers. It is important to consider the size of these files; because this will affect the time it takes to send the file. Before editing the video files we recommend that you select footage with the audio and video track separated. For instance \*.avi type files

01/X/2010